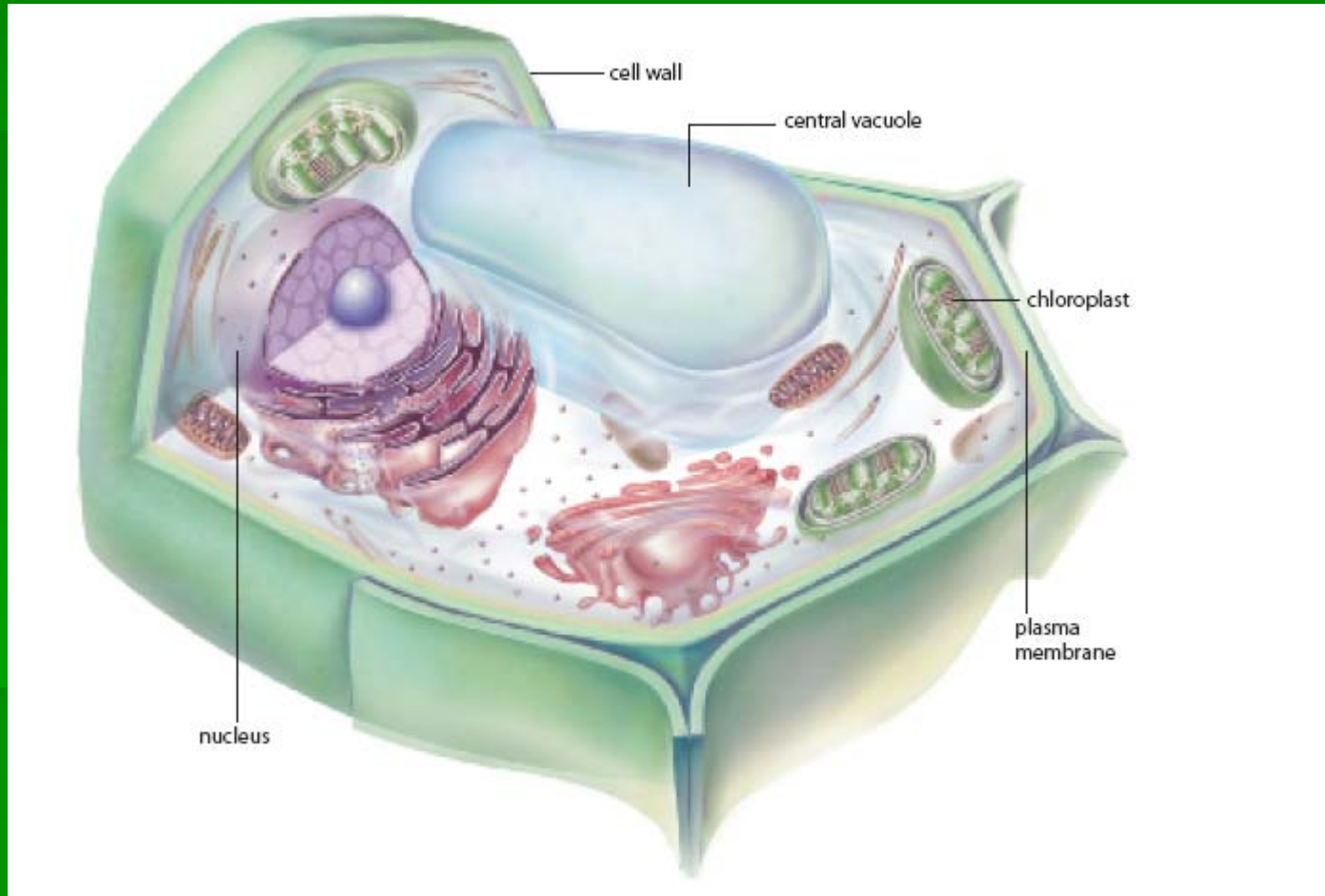


PLANT: TYPES OF CELLS

General Plant Cell



Types of Plants

- Parenchyma Cells
- Collenchyma Cells
- Sclerenchyma Cells

Parenchyma Cells

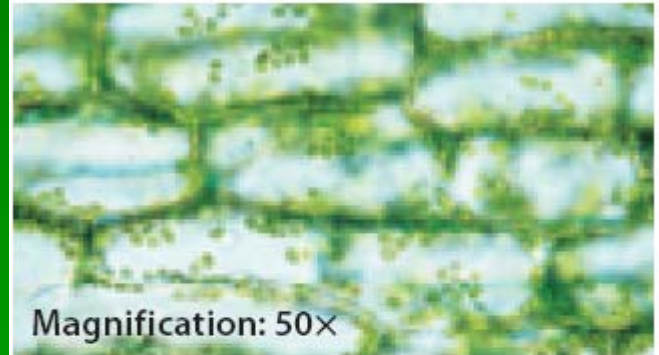
STRUCTURE:

- Flexible
- Thin-walled

FUNCTION:

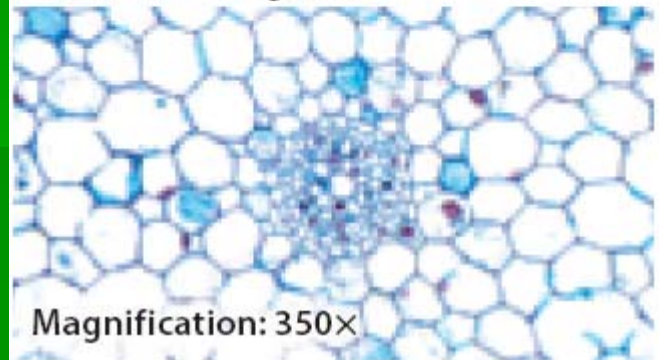
- Photosynthesis
- Storage
- Protection
- Gas Exchange

With chloroplasts



Magnification: 50×

Without chloroplasts



Magnification: 350×

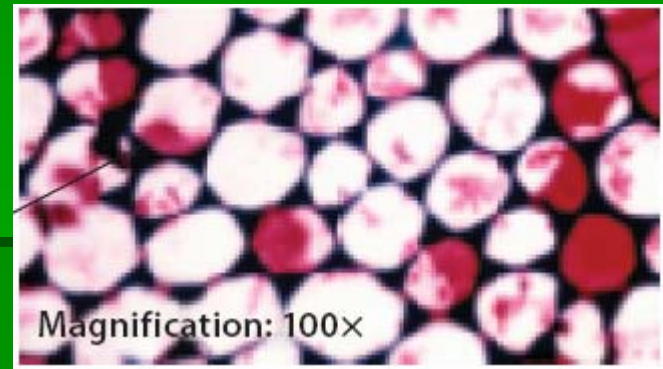
Collenchyma Cells

STRUCTURE:

- Flexible
- Uneven cell wall thickness

FUNCTION:

- Support
- Flexibility



Sclerenchyma Cells

STRUCTURE:

- Tough
- Thick-walled
- Eventually die

FUNCTION:

- Support mature plant

