

Name: _____

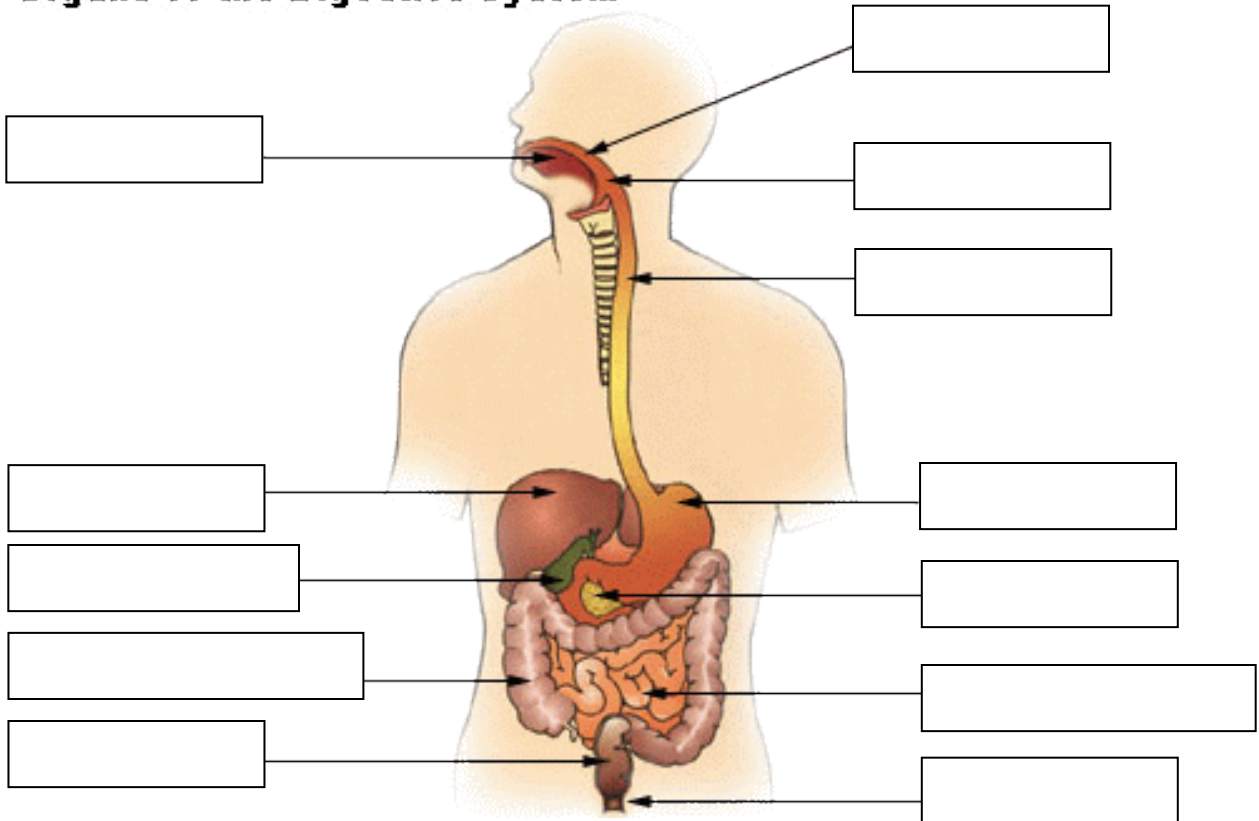
Date: _____

Worksheet 9-1 Digestive System (Nelson p.94-99)

1. Label the diagram below using the key terms provided.

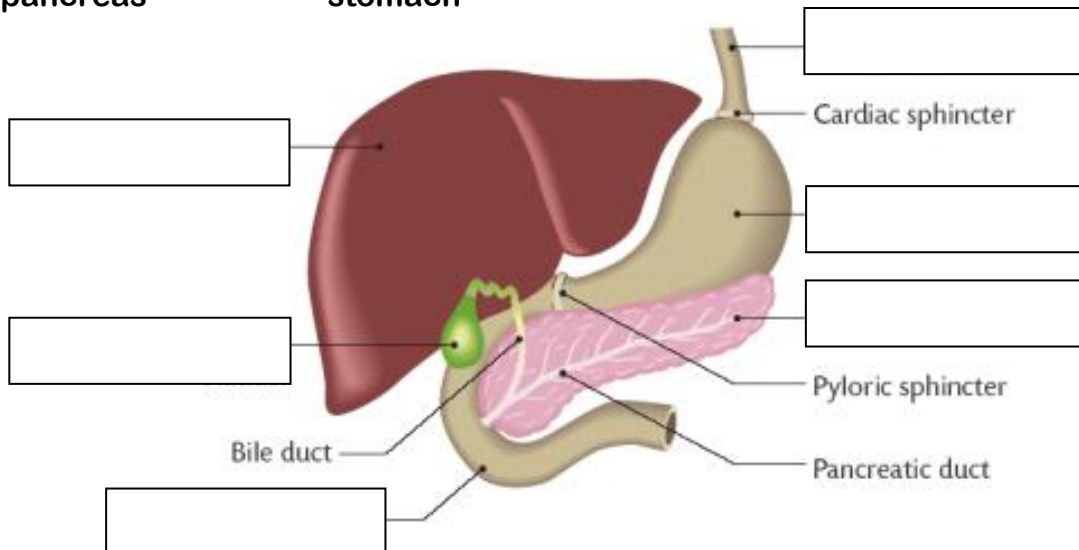
- | | | | | |
|------------------------|------------------|-------------------------|------------------------|----------------|
| anus | esophagus | gall bladder | large intestine | liver |
| mouth | pancreas | pharynx (throat) | rectum | stomach |
| small intestine | | tongue | | |

Organs of the Digestive System



2. Label the diagram below using the key terms provided.

- | | | | |
|------------------|-----------------|---------------------|--------------|
| esophagus | duodenum | gall bladder | liver |
| pancreas | stomach | | |



3. **Three main functions (jobs)** of the digestive system are

- a) _____
- b) _____
- c) _____

4. The **main parts** of digestive system are

- a) Digestive tracts: _____, _____, _____, _____, _____, _____ and _____.
- b) Accessory organs: _____, _____, and _____.

5. Describe the **path of food** as it is moved through the digestive system.

Food passes from the _____ to the _____, _____, _____, _____, _____, _____ and _____.

6. Match **each function** with the parts of digestive tracts or accessory organs using the key terms provided.

- | | | | |
|------------------------|------------------|---------------------|---------------------|
| Anus | esophagus | gall bladder | goblet cells |
| large intestine | liver | mucus | pancreas |
| small intestine | stomach | | |

Parts of Digestive System	Function
	Stores bile from the liver
	Produces bile that helps break down fats in food
	Produces insulin that controls the absorption of sugar into body's cell
	Moves the food from the mouth to the stomach
	Mixes food and bathes it in strong acid
	Absorbs remaining water from undigested food
	Absorbs nutrients into the bloodstream
	Wastes exit the body
	Protects the digestive tract from being damaged by the digestive enzymes
	Produce mucus