

Name: _____

Date: _____

Lesson 1 Animal Cells (Nelson p.28-31)

Learning Goals:

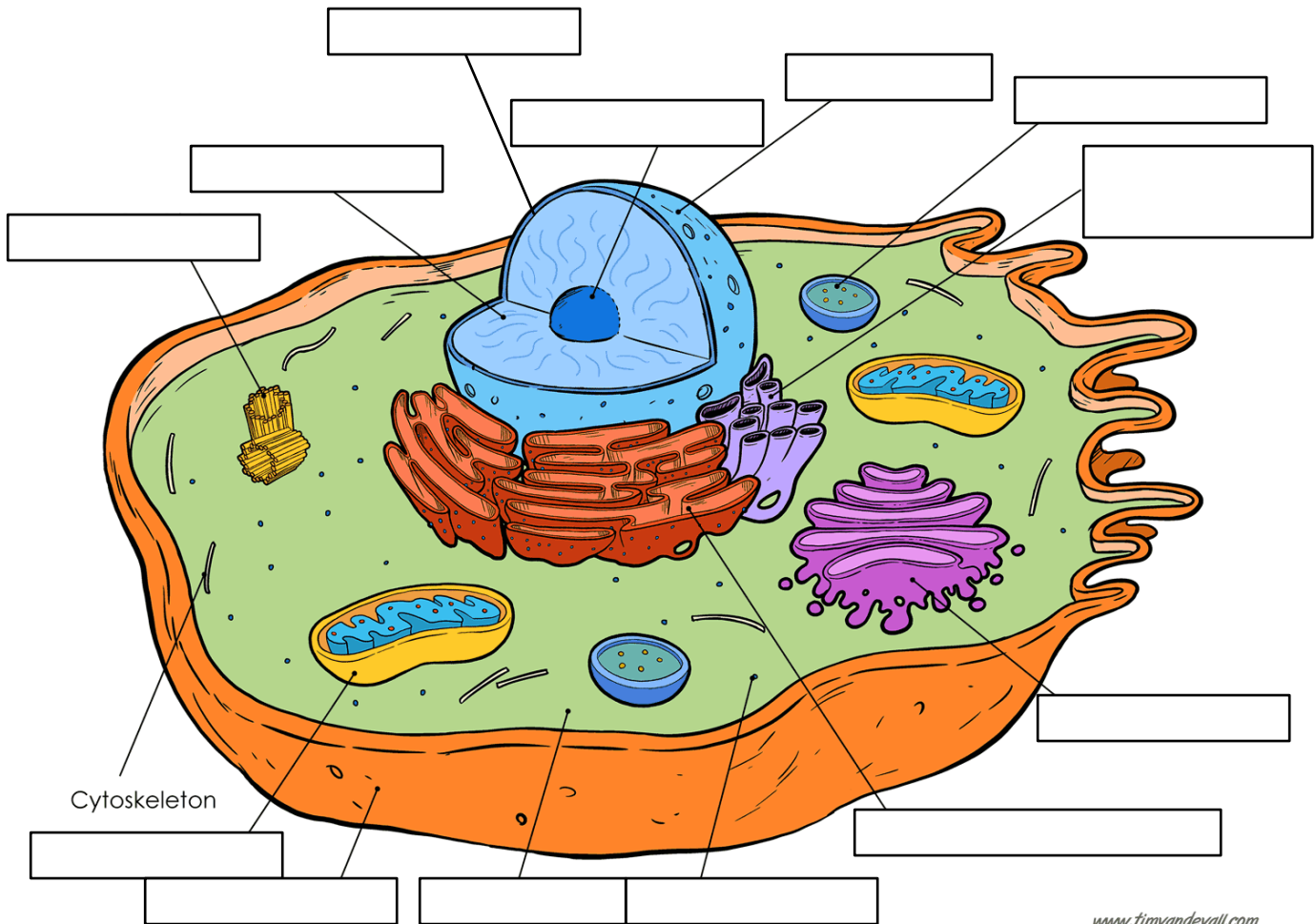
- A. I can use appropriate terminology related to human cells, tissues, organs and systems.
- B. I can label organelles in animal cells and describe their functions.

Cell: the _____ of any living organisms.

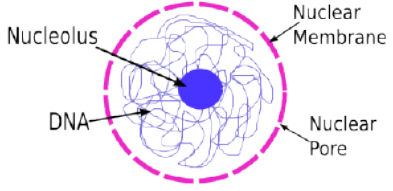
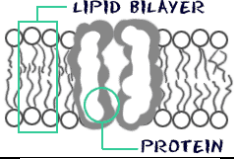
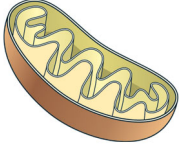
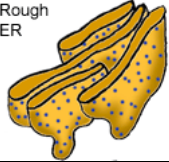

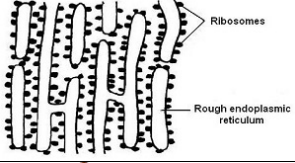

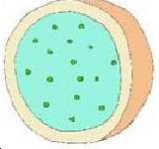
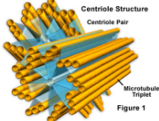
Cells have different parts called _____.

Organelle: part of a cell that does a _____ for the cell

Animal Cell Structure (Nelson Science 10, page 30)



Cell Structures and Functions (Nelson p.29-32)

Organelle	Look Like	Function of Organelle
		<ul style="list-style-type: none"> • “Control centre”: Contains genetic information to control all cell activities
		<ul style="list-style-type: none"> • Protects the nucleus
		<ul style="list-style-type: none"> • Makes ribosomes
	<p>Thread-like structures in the nucleus</p>	<ul style="list-style-type: none"> • Contains DNA (deoxyribonucleic acid) which carries genetic instructions for all cell activities
	<p>Jelly-like liquid</p>	<ul style="list-style-type: none"> • Filled with sugar and water • Contains organelles
		<ul style="list-style-type: none"> • Protects the cell
		<ul style="list-style-type: none"> • “Power plant”: Makes energy for the cell
		<ul style="list-style-type: none"> • Cell's transport system: Transports proteins made by ribosomes • Rough type: ribosomes
		<ul style="list-style-type: none"> • Smooth type: no ribosomes • Makes and stores fat
		<ul style="list-style-type: none"> • “Protein factories”: Make proteins
		<ul style="list-style-type: none"> • Protein “packaging plant”: Sorts and packages proteins for transport out of cell
		<ul style="list-style-type: none"> • “Digestive plant”: Contains chemicals that break down dead organelles and bacteria
		<ul style="list-style-type: none"> • Helps cell to divide